



Multiple Application Platform Server

MAPS 6.2 Release Guide

Product version 6.2

Last updated 5/23/2019

Trademark, Publishing Statement, and Copyright Notice

© 1998-2019 Evisions, Inc. All rights reserved.

This software and related documentation are provided under a license agreement containing restrictions on use and disclosure and are protected by intellectual property laws. No part of this document may be reproduced, stored in or introduced into a retrieval system, or transmitted in any form or by any means (electronic, mechanical, photocopying, recording, or otherwise), or for any purpose, without the express written permission of Evisions, Inc.

The information contained herein is subject to change without notice and is not warranted to be error-free. Product features referenced herein for a period of time may not match product contents. Evisions, Inc. does not warrant that the functions contained in the software will meet your requirements or that the operation of the software will be uninterrupted or error free. Evisions, Inc. reserves the right to make changes and/or improvements in the software without notice at any time.

This software and documentation may provide access to or information on content, products, and services from third parties. Evisions, Inc. and its affiliates are not responsible for and expressly disclaim all warranties of any kind with respect to third-party content, products, and services. Evisions, Inc. and its affiliates will not be responsible for any loss, costs, or damages incurred due to your access to or use of third-party content, products, or services. Evisions, Inc. does not endorse the content or developer of any products or web sites mentioned.

All information in this guide is designed for instructional purposes only. Evisions, Inc. makes no guarantees regarding the accuracy or performance of any techniques used in this guide. Software configurations and environments may vary, and some techniques used in this guide may not operate efficiently under all configurations. This guide may contain examples of various technologies or products, which are the sole property and responsibility of their creators.

Trademarks are the property of the respective owners for any products mentioned herein.

Table of Contents

Table of Contents	3
What's New in MAPS 6.2?	4
MAPS Updates	4
Product versions	4
Installation	4
1. Prepare test environment and ensure current backup	4
2. Check for updates	4
3. Allow update process to complete	5
4. Verify the latest version is installed	5
Salesforce Connector	6
Data Connection Configuration	6
Custom User Fields	8
MAPS 6.2 Release Notes	9
Getting Help	11

What's New in MAPS 6.2?

Evisions is pleased to announce the release of MAPS version 6.2, which includes the following changes:

- Created a new Salesforce Connector option for creating data connections to Salesforce environments.
- Added three custom fields that can be configured as needed for MAPS and LDAP users.
- Added support for TLS versions 1.1 and 1.2 for email and FTPS servers.
- Added support for the CAS 3.0 protocol (CAS service version 5.3).
- Additional enhancements and resolved issues.

We appreciate the feedback received from all of our users. Our products would not be what they are today without your continued support. If you have any comments or suggestions, please do not hesitate to [open a HelpDesk ticket](#) and let us know.

MAPS Updates

MAPS 6.2 is an update to the MAPS service (which includes the eLauncher) and the MAPS Config. You should upgrade both components concurrently.

[Product versions](#)

The latest versions of MAPS included in this release are:

- MAPS service 6.2.0.2094 / MAPS Config 6.2.0.1124 / eLauncher 6.2.0.26

Installation

[1. Prepare test environment and ensure current backup](#)

We highly recommend installing updates in a test environment before applying them to your production environment. You should make sure that a current backup is available in case of any unforeseen issues. To create a full backup of your MAPS environment, go to the **Server -> Backups** screen in MAPS and click **Backup Now**.

[2. Check for updates](#)

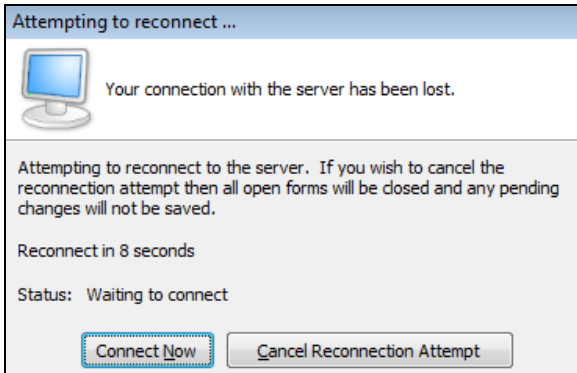
Click the **Check for Updates** button in the MAPS Configuration tool to view available updates.

If you need to apply earlier updates prior to the 6.2 update, please refer to the appropriate [release guide\(s\)](#) before proceeding.

It is possible to apply updates when users are on the system; however, to avoid the possibility of losing unsaved work we recommend applying updates during off hours.

[3. Allow update process to complete](#)

When applying updates to the MAPS service you will be temporarily disconnected from the server:



The update process may take a few minutes to complete. **Do NOT cancel the reconnection attempt or manually restart the server.** You will automatically be reconnected to the server once the update has been applied.

[4. Verify the latest version is installed](#)

To ensure that you are on the most current version, continue clicking the **Check for Updates** button and applying the updates until no new updates are available.

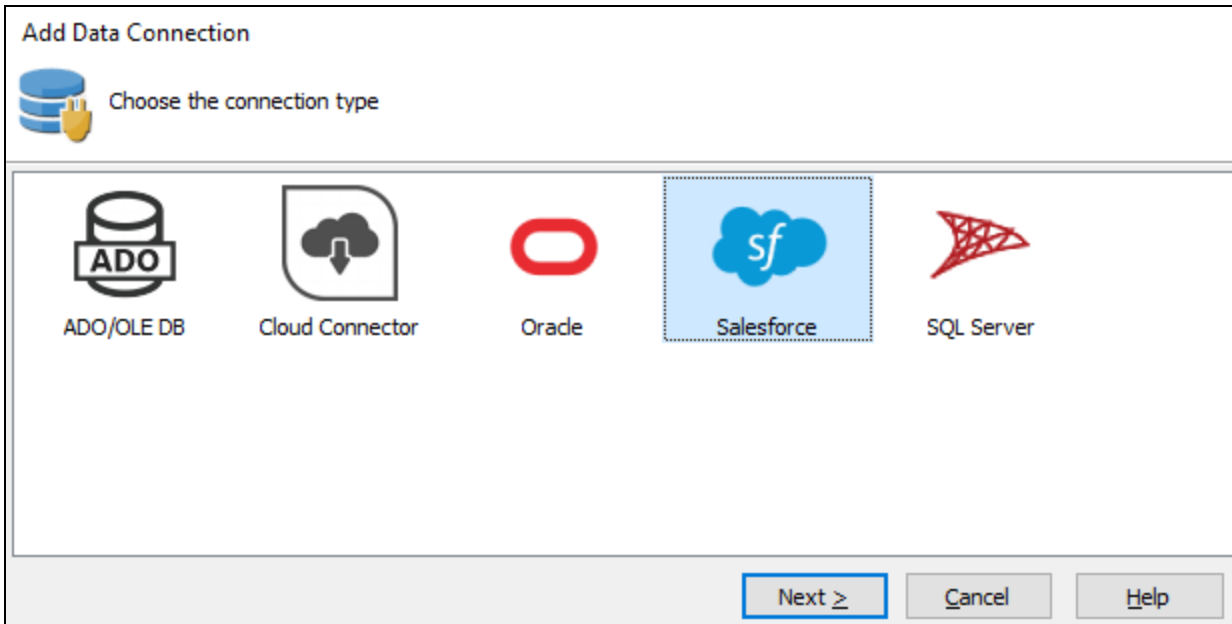
[Please Provide Us with Your Feedback!](#)

As always, we welcome any [feedback or suggestions](#) you may have. We very much appreciate your thoughts and suggestions, so please keep the great ideas coming!

Salesforce Connector

The Salesforce Connector is a new [module](#) that allows you to create a data connection to an existing Salesforce environment. Salesforce data connections can be used to pull data from the Salesforce tables into Argos and other MAPS applications as desired, so you can report against them and use Salesforce data in your queries.

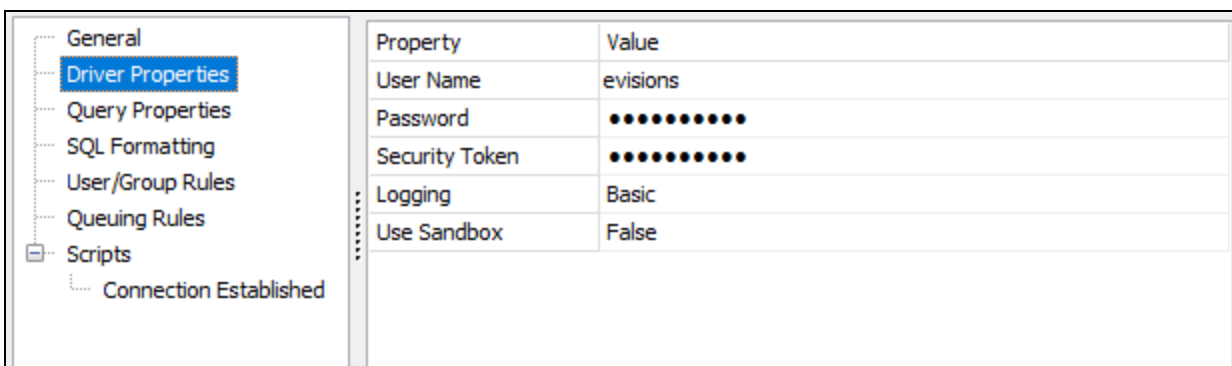
When creating a data connection in MAPS, the initial dialog has been redesigned and you will now see a new option for Salesforce.



The Salesforce connection type is grayed out if you are not licensed for the Salesforce module. Please [contact us](#) if you would like a demo or an evaluation license to try out the Salesforce connector.

Data Connection Configuration

Similar to other data connection types, you enter the database details in the Driver Properties section.



- **User Name/Password** - The credentials used to log in to Salesforce.
- **Security Token** - The security token generated by Salesforce when you created the account or last changed the password. The token is case sensitive.

- **Logging** - Set the verbosity of the Salesforce log file stored on the MAPS server.
 - **Off** - No log will be generated (default).
 - **Basic** - Logs the query, the number of rows returned, start of execution, time taken, and any errors.
 - **Full** - Also includes cache queries, HTTP headers, request and response body, SSL negotiation, interface commands, and other details that may be helpful in troubleshooting a problem. This mode is not recommended for normal operation since the large amount of data logged may result in slower execution times.

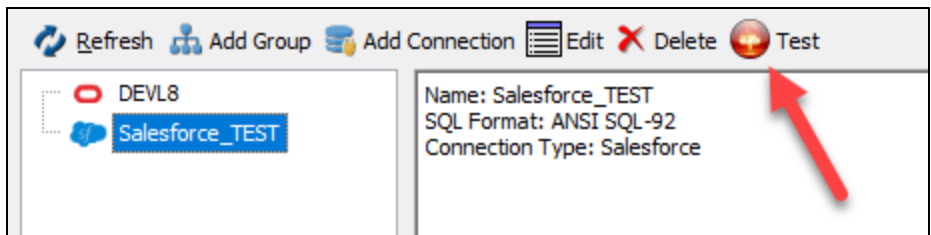
Note: In clustered environments, Salesforce logs are only stored on the server node where the query was executed.

- **Use Sandbox** - Set this to True in order to use a sandbox (test) Salesforce environment. You will also need to append the sandbox name to the username as described in the Salesforce documentation. For example, if your username is "user" and the sandbox name in Salesforce is "sandbox", the username should be set to "user.sandbox".

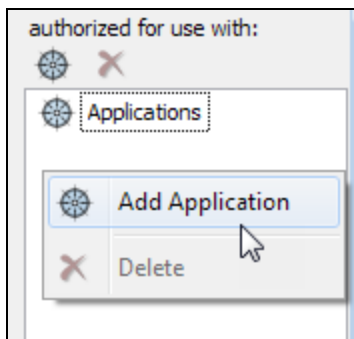
You can leave the other data connection properties set to their defaults.

- **SQL Formatting** - Leave the SQL Format set to its default of ANSI SQL-92. For information on constructing queries using the Salesforce Connector, refer to the [Salesforce Connector Queries](#) page in the MAPS help.
- **User/Group Rules** - As with any data connection, you will need to configure which users and groups should have access to the connection. At this time, the only options supported for Salesforce connectors are "Use connection username and password" and "Not allowed to connect". The other options will not work because there is no way to enter the necessary security token.
- Other options such as query properties, queuing rules, and scripts can be configured as desired.

Click OK to close the data connection configuration dialog. To verify that everything is configured correctly, use the **Test** button at the top of the Data Connections screen to verify that you are able to connect to Salesforce.



Finally, don't forget to authorize the new data connection for use with the MAPS applications (Argos, etc.).

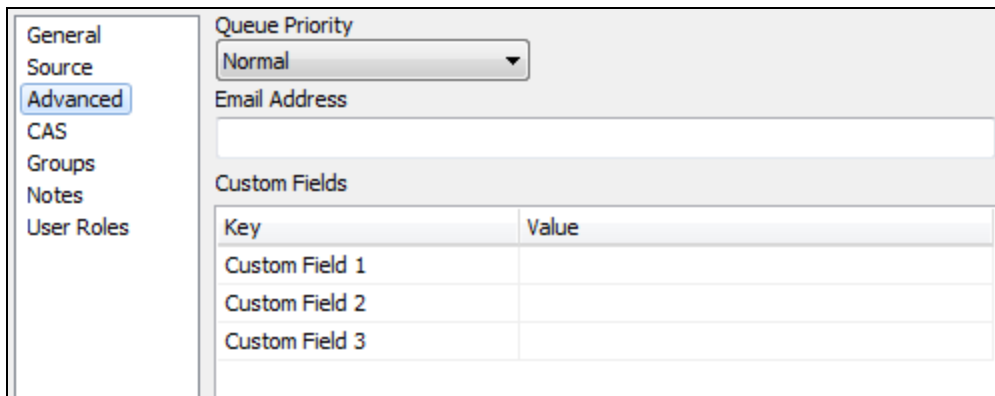


The Salesforce data connection is now ready for use.

Custom User Fields

When configuring MAPS and LDAP users, you now have the ability to specify up to three custom fields to store any additional user data you require.

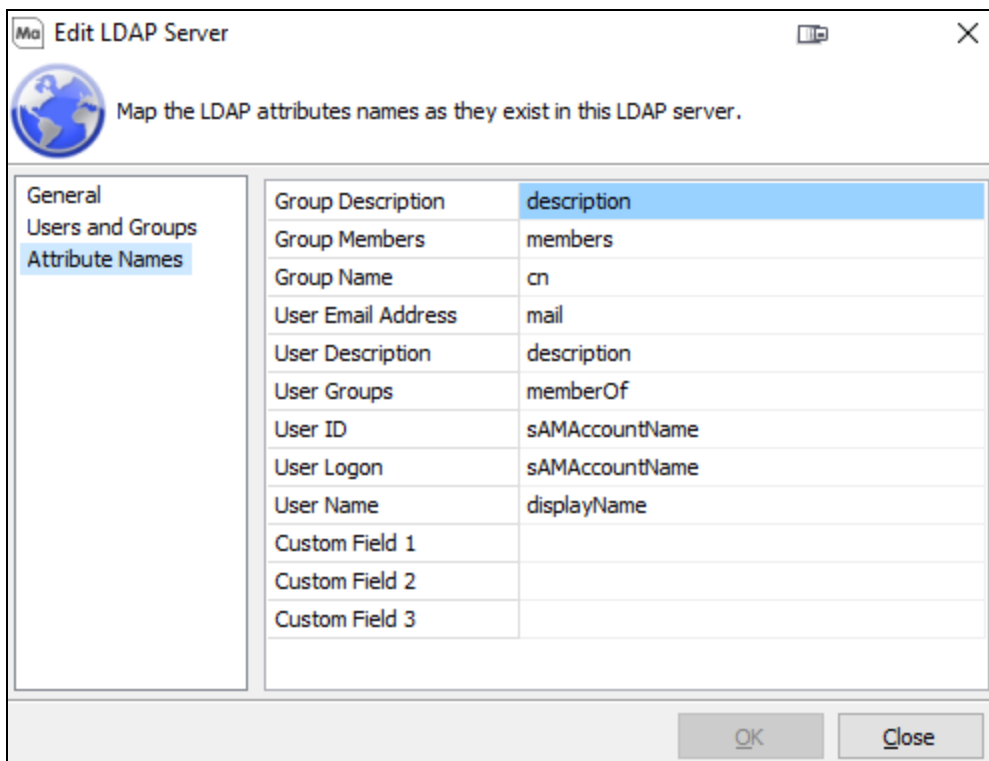
For MAPS users, the custom fields can be found on the Advanced tab of the User Properties dialog.



Key	Value
Custom Field 1	
Custom Field 2	
Custom Field 3	

These fields contain static text entered by the MAPS Administrator.

For LDAP users, the custom fields are defined in the LDAP server configuration using existing attributes from the LDAP server.



Group Description	description
Group Members	members
Group Name	cn
User Email Address	mail
User Description	description
User Groups	memberOf
User ID	sAMAccountName
User Logon	sAMAccountName
User Name	displayName
Custom Field 1	
Custom Field 2	
Custom Field 3	

For both types of users, the custom fields can be accessed as variables in places such as the data connection username, connection and rule scripts, and as system variables within Argos. To reference a custom field in one of these locations, you would enter `$(User.CustomField1)`, `$(User.CustomField2)`, or `$(User.CustomField3)`. One use case for this would be to configure an Ellucian™ Banner® [proxy account](#) for each user.

MAPS 6.2 Release Notes

MAPS Service 6.2.0.2094 / MAPS Config 6.2.0.1124 / eLauncher 6.2.0.26

MAPS

Enhancements

Area	Description	Issue number
Auditing	The Auditing Summary screen now allows you to limit the number of records returned at a time, similar to the Auditing Detail screen.	MAPS-2041
CAS	Added support for the CAS 3.0 protocol (CAS service version 5.3).	MAPS-1790
Clustered installations	Added the MAPS service version to the Nodes screen for clustered installations.	MAPS-1990
Clustered installations	The server node dropdown for clustered installations now updates in real time when nodes are added or go offline.	MAPS-2003
Config	MAPS log files can now be sorted by their creation date in addition to filename and size.	MAPS-1985
Data connections	Added three custom fields that can be configured as needed for MAPS and LDAP users.	MAPS-2011
Data connections	Created a new Salesforce Connector option for creating data connections to Salesforce environments.	MAPS-2202
Email	Test emails sent from MAPS Config now support Unicode characters in the email body.	MAPS-1808
Email	MAPS now supports connecting to email and FTPS servers with TLS versions 1.1 and 1.2. Previously, only version 1.0 was supported.	MAPS-1903
User interface	Updated the Edit Data Connection dialog to streamline configuration by selecting the connection type on the first screen.	MAPS-2111
User interface	Updated the icons used for various types of data connections and renamed "connection pools" to "connection groups".	MAPS-2147

Resolved Issues

Area	Description	Issue Number
Accessibility	The top and right panes in the MapsDbConfig utility used for clustered installations did not update their background colors when Windows was set to a High Contrast theme, resulting in the text not being visible.	MAPS-2013
Accessibility	Improved contrast of the left menu in the MAPS Database Configuration Wizard.	MAPS-2020
CAS	CAS users were being included in the Everyone group even if they were not added to MAPS individually or a member of an LDAP group that was added to MAPS.	MAPS-2101
Cloud Connector	Cloud Connector data connections were leaving a 1 MB temporary file behind in the local AppData directory each time the data was refreshed.	MAPS-2004
Clustered installations	After updating a mapplet or the MAPS license in a clustered environment, the update was still appearing in the list of available updates after switching to a different node within the cluster.	MAPS-1993
Clustered installations	Changing the MAPS database configuration from one PostgreSQL schema to another or from SQLite to	MAPS-

Area	Description	Issue Number
	PostgreSQL without migrating data from a previous SQLite database was resulting in an error when attempting to access MAPS Config.	2018
Clustered installations	When adding a node to an existing cluster, the database configuration wizard allowed invalid config.json files, which would cause an access violation and prevent the wizard from being rerun.	MAPS-2019
Clustered installations	In clustered environments, the option to disable users after a certain number of incorrect login attempts was counting login attempts on a per-node basis. This feature now works correctly no matter which node the user tries to log in to.	MAPS-2059
Config	System messages longer than the width of the screen were being cut off in the MAPS Config application instead of wrapping.	MAPS-1925
Config	MAPS was retaining one backup fewer than the number of functional backups to keep specified on the Server -> Backups screen.	MAPS-1958
eLauncher	If the eLauncher was opened in multiple browser tabs, logging in to one tab would also log in on the other tabs, but the other tabs were not associated with a username.	MAPS-1889
Log files	The error message that appeared in the log file when MAPS was unable to acquire a read lock was showing a variable placeholder instead of the name of the locked resource.	MAPS-1905
Security	Using the Random button on the Change Password dialog occasionally resulted in an "ERangeError" exception, particularly when MAPS was configured to use more stringent passwords.	MAPS-2152
User interface	In MAPS and Argos 6.1, various windows that would previously remember their size and location between sessions were no longer restoring these settings. This issue also affected DataBlocks run in the Argos client.	MAPS-2035

Getting Help

For information on using the software, please refer to the in-product Help, which contains detailed information on all aspects of the product.

If you are having problems with the installation or configuration, you can search our [support site](#), which includes a knowledge base of common issues. If you are unable to find the solution, submit a HelpDesk request with a detailed explanation of the problem you are experiencing.

Please do not hesitate to contact the Evisions HelpDesk if any questions or problems arise. We are here to help you and want to ensure your success.

If you find that areas of this documentation could benefit from additional detail or clarification, please let us know. We are constantly trying to improve the installation process to make it as easy as possible.